



Electrolux
PROFESSIONAL

**High Productivity Cooking
Electric Tilting Boiling Pan, 300lt
Hygienic Profile, Freestanding with
Stirrer and Variable Speed**

ITEM #

MODEL #

NAME #

SIS #

AIA #



586891 (PBOT30WDEO)

* NOT TRANSLATED *

Main Features

- Kettle is suitable to boil, steam, poach, braise or simmer all kinds of produce.
- Mixing stirrer works at variable speed from 10 to 100 rpm with 3 rotation patterns.
- Isolated upper well rim avoids risk of harm for the user.
- IPX6 water resistant.
- Ergonomic vessel dimensions, with a large diameter and shallow depth facilitates stirring and gentle food handling.
- Edge of the large pouring lip can be equipped with a strainer (option).
- Motorized, variable pan tilting with "SOFT STOP". Tilting and pouring speeds can be precisely adjusted. Pan can be tilted over 90° to facilitate pouring and cleaning operations.
- Built in temperature sensor to precisely control the cooking process.
- USB connection to easily update the software, upload/download recipes and download HACCP data.
- [NOT TRANSLATED]

Construction

- Cooking vessel in 1.4435 (AISI 316L) stainless steel featuring directional pouring lip. Double-jacket in 1.4404 (AISI 316L) stainless steel designed to operate at a pressure of 1.5 bar.
- External panelling and internal frame made of 1.4301 (AISI 304) stainless steel.
- Double-lined insulated lid in 1.4301 (AISI 304) stainless steel mounted on the cross beam of the unit, counterbalanced by a hinge that remains open in all positions.
- Safety valve avoids overpressure of the steam in the double jacket.
- Safety thermostat protects against low water level in the double jacket.
- Water mixing tap is available as optional accessory to make water filling and pan cleaning easier.
- Ergonomic and user friendly thanks to the high tilting position and the pouring lip design which allow to easily fill containers.
- Front-mounted inclined led "TOUCH" control panel with recessed deep drawn casing, features self-explanatory display functions which guide operator throughout the cooking process: simultaneous display of actual and set temperature as well as set cooking time and remaining cooking time; real time clock; "SOFT" control for gentle heating up for delicate food; 9 power simmering levels from gentle to heavy boiling; timer for deferred start; error display for quick trouble-shooting.
- Minimised presence of narrow gaps for easier cleaning of the sides to meet the highest hygiene standards.
- Can be prearranged for energy optimisation or external surveillance systems (optional).

APPROVAL:



Experience the Excellence
www.electroluxprofessional.com

- Possibility to store recipes in single or multiphase cooking process, with different temperature settings.
- 98% recyclable by weight; packaging material free of toxic substances.
- GuideYou Panel - activated by the user via settings - to easily follow the multiphase recipes, granting a proper and controlled cooking and a better appliance optimization. The system will provide maintenance reminders, in line with ESSENTIA program, helping the user to properly take care of the product, avoiding downtimes.
- Highly-visible and bright led TOUCH control panel features user-friendly icons and intuitive self-explanatory command options. Display visualizes: Actual and set temperature Set and remaining cooking time Pre-heating phase (if activated) GuideYou Panel (if activated) Deferred start Soft Function to reach the target temperature smoothly 9 Power Control levels from simmering to fierce boiling Pressure mode (in pressure models) Stirrer ON/OFF settings (in round boiling models) Error codes for quick trouble-shooting Maintenance reminders

User Interface & Data Management

- Connectivity ready for real time access to connected appliances from remote and data monitoring (requires optional accessory - contact the Company for more details).

Included Accessories

- 1 of Emergency stop button - factory fitted PNC 912784
- 1 of - NOT TRANSLATED - PNC 913545

Optional Accessories

- Strainer for 300, 400 and 500lt tilting boiling pans PNC 910006 ☐
- Measuring rod for 300lt tilting boiling pans PNC 910047 ☐
- Grid stirrer for 300lt boiling pans PNC 910066 ☐
- Grid stirrer and scraper for 300lt boiling pans PNC 910096 ☐
- Strainer rod for stationary round boiling pans PNC 910162 ☐
- BOTTOM PL.+FEET 160X1000X200MM,TILT.PANS PNC 911475 ☐
- Stainless steel plinth for tilting units - against wall - factory fitted PNC 911812 ☐
- Stainless steel plinth for tilting units - freestanding - factory fitted PNC 911813 ☐
- FOOD TAP STRAINER - PBOT PNC 911966 ☐
- C-board (length 1500mm) for tilting units - factory fitted PNC 912187 ☐
- POWER SOCKET CEE-16A / 380V BUILT-IN PNC 912468 ☐
- POWER SOCKET CEE-32A / 380V BUILT-IN PNC 912469 ☐
- Power socket Schuko typ-23, 16A/230V, built-in version PNC 912470 ☐
- Power socket Swiss typ-23, 16A/230V, built-in version PNC 912471 ☐
- Power socket Swiss typ-23, 16A/380V, built-in version PNC 912472 ☐
- Power Socket, SCHUKO, built-in, 16A/230V, IP55, black - factory fitted PNC 912473 ☐

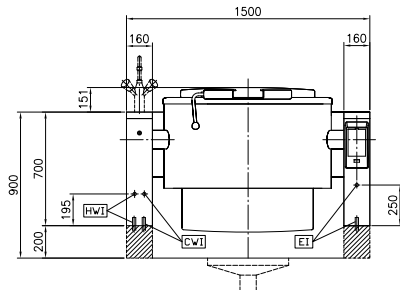
- Power Socket, CEE16, built-in, 16A/230V, IP67, blue-white - factory fitted PNC 912474 ☐
- Power Socket, TYP23, built-in, 16A/230V, IP54, blue - factory fitted PNC 912475 ☐
- Power Socket, SCHUKO, built-in, 16A/230V, IP54, blue - factory fitted PNC 912476 ☐
- Power Socket, TYP25, built-in, 16A/400V, IP54, red-white - factory fitted PNC 912477 ☐
- Panelling for plinth recess (depth from 70 to 270mm) for tilting units - factory fitted (Deutschland, Austria, Switzerland) - factory fitted PNC 912479 ☐
- Manometer for tilting boiling pans - factory fitted PNC 912490 ☐
- Rear closing kit for tilting units - against wall - factory fitted PNC 912707 ☐
- Automatic water filling (hot and cold) for tilting units - to be ordered with water mixer - factory fitted PNC 912735 ☐
- Kit energy optimization and potential free contact - factory fitted PNC 912737 ☐
- Rear closing kit for tilting units - island type - factory fitted PNC 912747 ☐
- Lower rear backpanel for tilting units, island type PNC 912771 ☐
- Mainswitch 60A, 10mm² - factory fitted PNC 912774 ☐
- Spray gun for tilting units - freestanding (height 700mm) - factory fitted PNC 912776 ☐
- Food tap 2" for tilting boiling pans (PBOT) - factory fitted PNC 912779 ☐
- - NOT TRANSLATED - PNC 913554 ☐
- - NOT TRANSLATED - PNC 913555 ☐
- - NOT TRANSLATED - PNC 913556 ☐
- - NOT TRANSLATED - PNC 913557 ☐
- - NOT TRANSLATED - PNC 913567 ☐
- - NOT TRANSLATED - PNC 913568 ☐
- - NOT TRANSLATED - PNC 913578 ☐



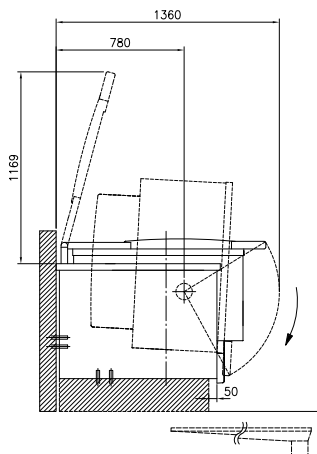
Electrolux
PROFESSIONAL

High Productivity Cooking
Electric Tilting Boiling Pan, 300lt Hygienic
Profile, Freestanding with Stirrer and Variable
Speed

Front

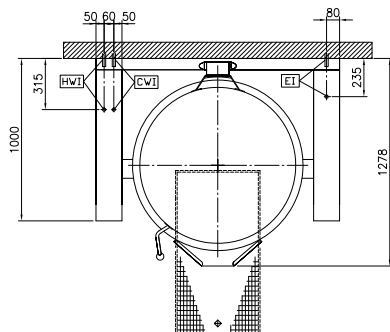


Side



CWI = Cold Water inlet 1 (cleaning)
EI = Electrical inlet (power)
HWI = Hot water inlet

Top



Electric

Supply voltage: 400 V/3N ph/50/60 Hz
Total Watts: 40 kW

Installation:

Type of installation: FS on concrete base; FS on feet; On base; Standing against wall

Key Information:

Working Temperature MIN: 50 °C
Working Temperature MAX: 110 °C
Vessel (round) diameter: 900 mm
Vessel (round) depth: 570 mm
External dimensions, Width: 1500 mm
External dimensions, Depth: 1000 mm
External dimensions, Height: 700 mm
Net weight: 430 kg
Configuration: Round, tilting, with stirrer
Net vessel useful capacity: 300 lt
Tilting mechanism: Automatic
Double jacketed lid: ✓
Heating type: Indirect

Energy Consumption

Standard:
Item heated: 0 lt
Heat up temperature: From 0°C to 0°C
Heat up time: 0 min

Sustainability

Energy consumed in heat up phase: 0
Energy efficiency: 0 %



High Productivity Cooking
Electric Tilting Boiling Pan, 300lt Hygienic Profile, Freestanding with
Stirrer and Variable Speed
The company reserves the right to make modifications to the products
without prior notice. All information correct at time of printing.

2025.04.24